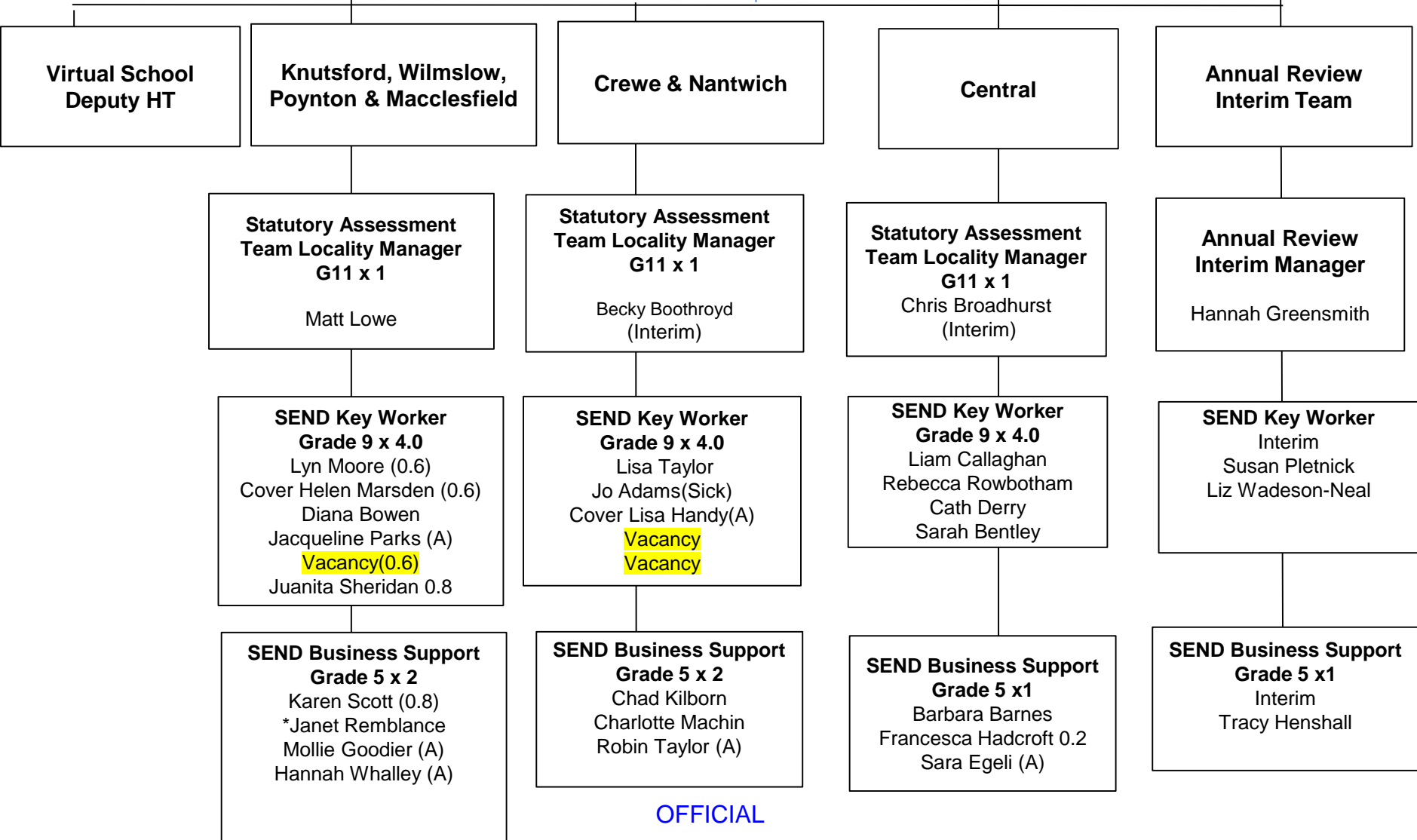


**Head of Service (SEND  
and Headteacher for  
Cared for Children)**  
Laura Rogerson



OFFICIAL

**Head of Service  
(SEND) Quality Development  
and Specialist services**  
Vacancy

**Inclusion Quality  
Manager**  
Grade 11 x1  
Vacancy

**Interim Team Manager**  
Sensory Inclusion Service  
Debbie Hiom 1.0

**Interim Team Manager**  
Cheshire East Autism Team  
Joan Sherry 1.0

**Inclusion Quality Senco**  
Dawn Cranshaw  
Andrea Phelps Brown  
Katie Goodwin  
Kay Clarke

**Specialist Teachers of the  
Deaf**  
Emma Barr 1.0  
Lisa Houghton Wright 1.0  
Katie Priestley 1.0  
Rebecca Sanderson 1.0  
Fran Sheratte 0.8  
Marie Clare Tyrell 0.8  
Bernadette Molloy 0.4

**Specialist Teachers for  
the Visually Impaired**  
Christina Price Jones 1.0  
Hollie Steed 1.0  
Bernadette Molloy 0.6  
Fliss McDonald – (in  
training) 0.6

**Specialist Teacher**  
Kelly Martin 1.0  
Lyndsey Smith 0.5  
Ruth Wangermann 0.8

**SEND Transition  
Co-ordinator Gr 9**  
Louis Joyce (Mat Leave)

**Specialist Support  
Assistant**  
Sue Scarle 0.6  
Michael Wozencroft-Reay  
0,8

**Project Officer**  
Grade 8x1  
Vacancy

**Specialist Teaching  
Assistants (HI)**  
Lynn Quinn 0.7  
Elaine Hendrie 0.2

**Habilitation  
Specialists/Specialist  
Teaching Assistants (VI)**  
Gill Estcourt 1.0  
Catherine Forster 0.6  
Rachael Thompson (in  
training) 1.0

**Family Liaison Officer**  
Janet Threader 0.5

**SEND Business Support  
Officer**  
Grade 5 x 1  
Vacancy

**Technician  
(HI+VI Teams)**  
Glen McLellan 0.8

**SALT**  
Alison Lindopp 0.5

**Business Support Assistants  
SIS + CEAT**  
Clare O'Connor (Crewe) 1.0  
Rachael Kimber (Mac covering  
for Gilly O'Mara) 0.6